

JUL 22 2005

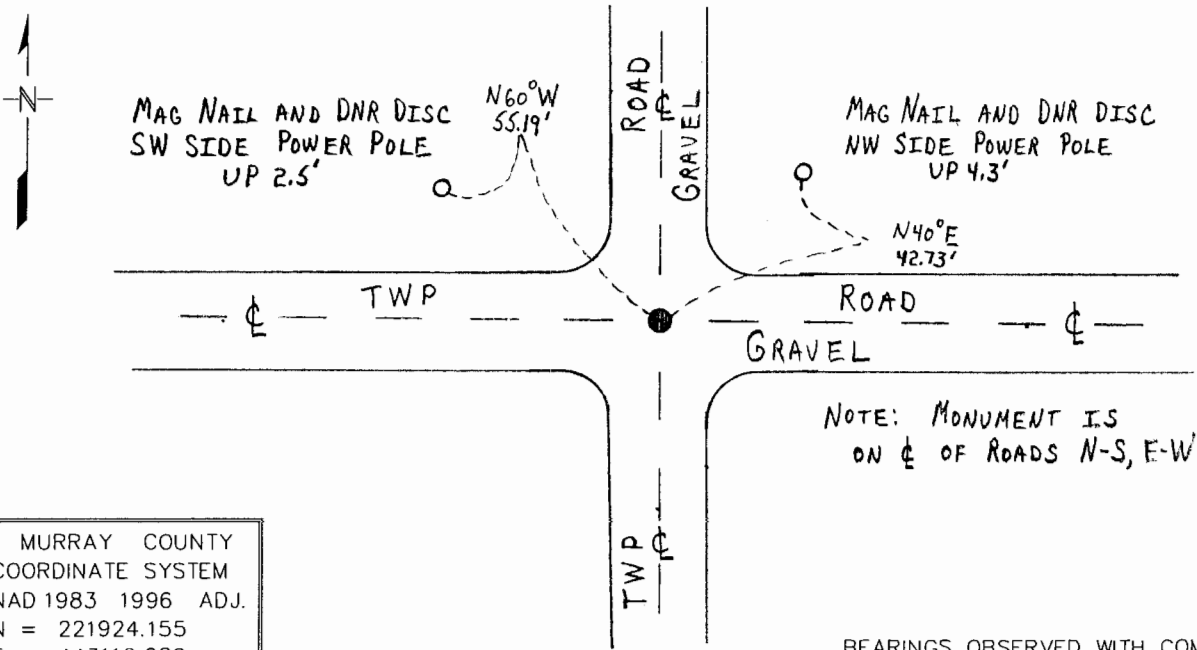
Index No. E-17

CERTIFICATE OF LOCATION OF GOVERNMENT CORNER

NORTHEAST Corner of Section 10, Township 108 N, Range 43 W
5th Principal Meridian, State of Minnesota, County of MURRAY

At the corner location shown on the sketch:

- On 9/30/03 found a 16" BY 15" BY 9" GRANITE STONE, DOWN 2.5'
DATE
- left monument as found, lowered monument, removed monument (explain)
- On 9/30/03 Placed a 3/4" BY 24" REBAR WITH A PLASTIC CAP STAMPED
DATE
"MN DNR LS 17003", DOWN 0.5', OVER FOUND STONE



MURRAY COUNTY
COORDINATE SYSTEM
NAD 1983 1996 ADJ.
N = 221924.155
E = 443110.622

BEARINGS OBSERVED WITH COMPASS

Statement of evidence for this corner location is on back of this page.

WMA00165.00.00.01

I certify that this document was researched and prepared by me or under my direct supervision.

SIGNATURE *Russ W. Steppes* DATE 7-19-05 License Number 17003
 Title: Land Surveyor Professional Engineer County Surveyor County Engineer

Northeast Corner Section 10, Township 108 North, Range 43 West

The DNR Division of Lands and Minerals contacted the following for survey information:

Minnesota Secretary of State's Office
Murray County Recorder's Office
Murray County Highway Engineer's Office
Madsen Land Surveying, Inc. of Fairmont

1866 U.S. General Land Office notes, obtained from the Secretary of State's Office, show the corner marked with a post in a mound.

1957 January, a page in a DNR field notebook, lists the following ties to corner:
at the intersection of roads north, south, east and west
corner fence post, northwest, 44.4 feet
power pole, northeast, 42.7 feet
corner fence post, southwest, 52.7 feet

A description of what kind of monument was found or set at corner is not given. The corner was found to be:

2649.4 feet from the north quarter corner of Section 11
5298.7 feet from the northeast corner of Section 11

1963 September, a page in a DNR field notebook, shows that a railroad spike was set for corner from the 1957 ties.

1965 February, a page in a DNR field notebook, shows that a railroad spike was found at corner.

1965 October, a page in a DNR field notebook, shows that a railroad spike was found at corner.

1979 July, field notes for a survey in Section 2 by Gary Martin, LS 12967, obtained from Madsen Land Surveying, Inc., state that a railroad spike was found at corner and no excavation was made in search of other monuments. The railroad spike was found to be:
2651.52 feet from the north quarter corner of Section 11

2003 September 30, the DNR Division of Lands and Minerals dug with a backhoe and found a 16 inch by 15 inch by 9 inch granite stone at corner, down 2.5 feet. Searched for but found no evidence of the record ties. The granite stone was found to be:
on the centerline of gravel roads north, south, east, and west
2649.21 feet from the north quarter corner of Section 11
5294.40 feet from the northeast corner of Section 11

Analysis of the above information led the DNR Division of Lands and Minerals to conclude that the found granite stone marks the location of the corner. A ¾ inch by 24 inch rebar with a plastic cap stamped "MN DNR LS 17003" was set directly over the found granite stone.